

Устройства защитного отключения SF1EL

Технические характеристики



Архангельск (8182)63-90-72
Астана +7(7172)727-132
Астрахань (8512)99-46-04
Барнаул (3852)73-04-60
Белгород (4722)40-23-64
Брянск (4832)59-03-52
Владивосток (423)249-28-31
Волгоград (844)278-03-48
Вологда (8172)26-41-59
Воронеж (473)204-51-73
Екатеринбург (343)384-55-89
Иваново (4932)77-34-06
Ижевск (3412)26-03-58
Казань (843)206-01-48

Калининград (4012)72-03-81
Калуга (4842)92-23-67
Кемерово (3842)65-04-62
Киров (8332)68-02-04
Краснодар (861)203-40-90
Красноярск (391)204-63-61
Курск (4712)77-13-04
Липецк (4742)52-20-81
Магнитогорск (3519)55-03-13
Москва (495)268-04-70
Мурманск (8152)59-64-93
Набережные Челны (8552)20-53-41
Нижний Новгород (831)429-08-12
Новокузнецк (3843)20-46-81

Новосибирск (383)227-86-73
Омск (3812)21-46-40
Орел (4862)44-53-42
Оренбург (3532)37-68-04
Пенза (8412)22-31-16
Пермь (342)205-81-47
Ростов-на-Дону (863)308-18-15
Рязань (4912)46-61-64
Самара (846)206-03-16
Санкт-Петербург (812)309-46-40
Саратов (845)249-38-78
Севастополь (8692)22-31-93
Симферополь (3652)67-13-56
Смоленск (4812)29-41-54

Сочи (862)225-72-31
Ставрополь (8652)20-65-13
Сургут (3462)77-98-35
Тверь (4822)63-31-35
Томск (3822)98-41-53
Тула (4872)74-02-29
Тюмень (3452)66-21-18
Ульяновск (8422)24-23-59
Уфа (347)22948 -12
Хабаровск (4212)92-98-04
Челябинск (351)202-03-61
Череповец (8202)49-02-64
Ярославль (4852)69-52-93

SF1EL - Series Earth Leakages

The SF1EL is a 26 mm wide, surface mounted earth leakage circuit breaker with a switched neutral and an additional 50 cm neutral cable attached. It is applied in commercial and industrial applications.



SF1EL
Surface Mount

Features

- Hydraulic-magnetic technology
- 100% rating capability, independent of ambient temperature
- AS/NZS 3111 and AS/NZS 3190 compliant
- Compact width 26 mm
- Operating voltage 240V AC single pole
- Immune to pulsating DC load current
- Ratings 6 to 40 A
- Earth leakage sensitivity 10 mA or 30 mA
- Single pole plus switched neutral earth leakage protection
- Additional neutral wire
- Precision tripping characteristics
- Trip indication with mid-trip position
- Reset immediately after overload
- Suitable to use for electrical isolation
- Shell design permits easier installation onto busbar

Applications

- Mining, heavy industrial and commercial applications requiring high sensitivity earth leakage protection from electrical shock and fire hazards
- Telecom / datacom equipment
- Lighting control
- UPS equipment
- Alternative energy equipment
- Mobile power generation equipment
- Railway signalling and infrastructure

SF1EL - Series Earth Leakages

Technical Data

Product Type	SF1EL
Approvals	AS/NZS 3111,AS/NZS 3190
Number of Poles	1+N
Standard Ampere Ratings	6, 10, 16, 20, 25, 32, 40 A
Sensitivity	10 mA / 30 mA
Rated Voltage	240V
Operating Voltage	240V AC
Rated Interrupting	6 kA

Product Type	SF1EL
Operating Temperature Range	-40 °C to +85 °C
Mounting Options	Surface mount
Time Delay Curves	1, 2, 3
Endurance	1500 electrical operations (AS/NZS 3111,AS/NZS 3190)
Dielectric Strength	1480V (single pole), 50 Hz for one minute after testing
Weight	400 g per pole (unpacked)
Humidity	35 to 85% relative
Altitude	Certification tests done at altitude ≈ 2000 metres. Will operate at higher altitudes.
Shock	16 G (IEC 600068-2-27)
Vibration	2 G (IEC 600068-2-27) (sinusoidal wave)
Flammability	I3 - Ignition does not persist at 850 °C after glow wire is withdrawn with an oxygen index of ≥ 28
Toxicity	F1 - Smoke index of ≤ 20 which determines the fume class
Pollution Degree	PD2 - Normally only non-conductive pollution occurs. Temporary conductivity caused by condensation is to be expected.

Earth Leakage	Wire Size mm ² (IEC)	Torque (IEC)	Comments
1+N	0.75 - 35 mm ²	2.5 Nm	Pozidriv #2 Combi head + Flat

SF1EL - Series Earth Leakages

Ordering Information

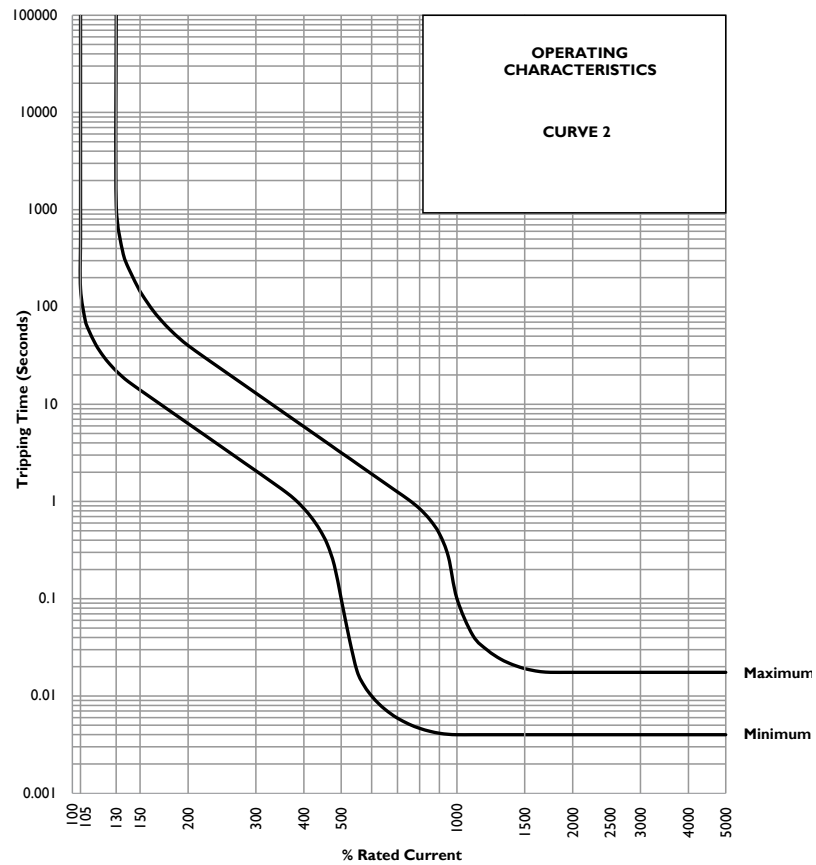
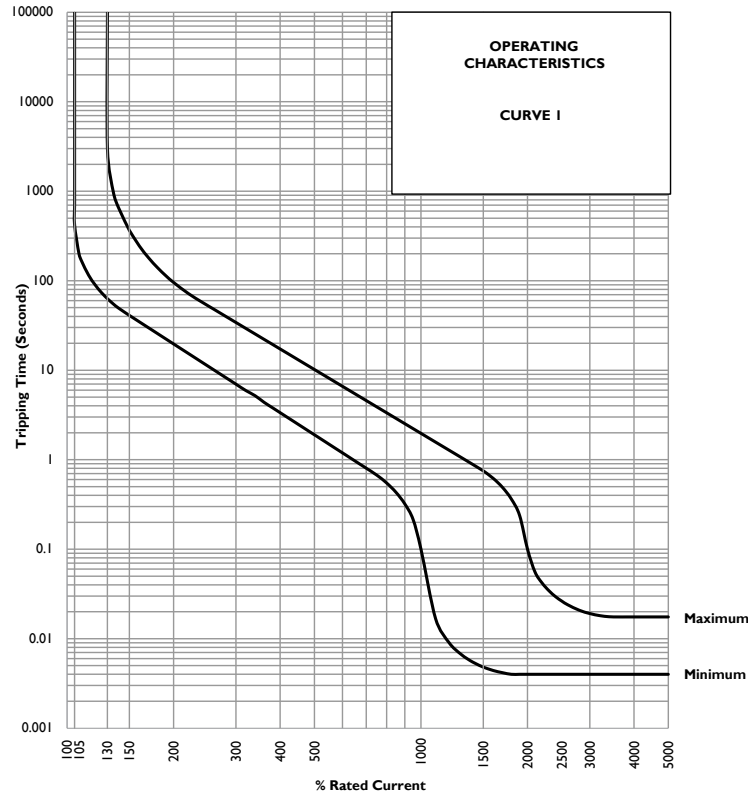
Example Code: SF1EL-2-40-A---30mA-240V--

Group	1	2	3	4	5	6	7	8	9	10
Requirement	S Frame	Type F	1 pole + N	Overload	No auxiliary	Medium delay curve 2	Current rating 40 A	Sensitivity 30 mA	Voltage 240 V AC	No special termination
Long Code	S	F	1	EL	-	2	40A	30mA	240V	-

Group 1: Frame Type	Code	Description	Comments
	S	26 mm wide earth leakage	
Group 2: Product Type	Code	Description	Comments
	F	240 V AC, 6 kA	
Group 3: No of Poles	Code	Description	Comments
	1	Single pole plus switched neutral (1+N)	SF1EL
Group 4: E-L Type	Code	Description	Comments
	EL	Overload (auto tripping)	White and green handle C / Orange
Group 5: Auxiliary / Additional Pole	Code	Description	Comments
	-	Not applicable	Use this code if no auxiliary used
Group 6: Time Delays	Code	Description	Comments
	1	Long time delay	
Group 7: Current Ratings	Code / Description	Description	Comments
		6, 10, 16, 20, 25, 32, 40 A	SF1EL Ratings available vary depending on certification * Other ratings are available as special orders. Check availability.
Group 8: Sensitivity	Code	Description	Comments
	10mA	10 mA	
Group 9: Voltage	Code	Description	Comments
	240V	240 V AC	
Group 10: Special Termination	Code	Description	Comments
	-	No special termination	

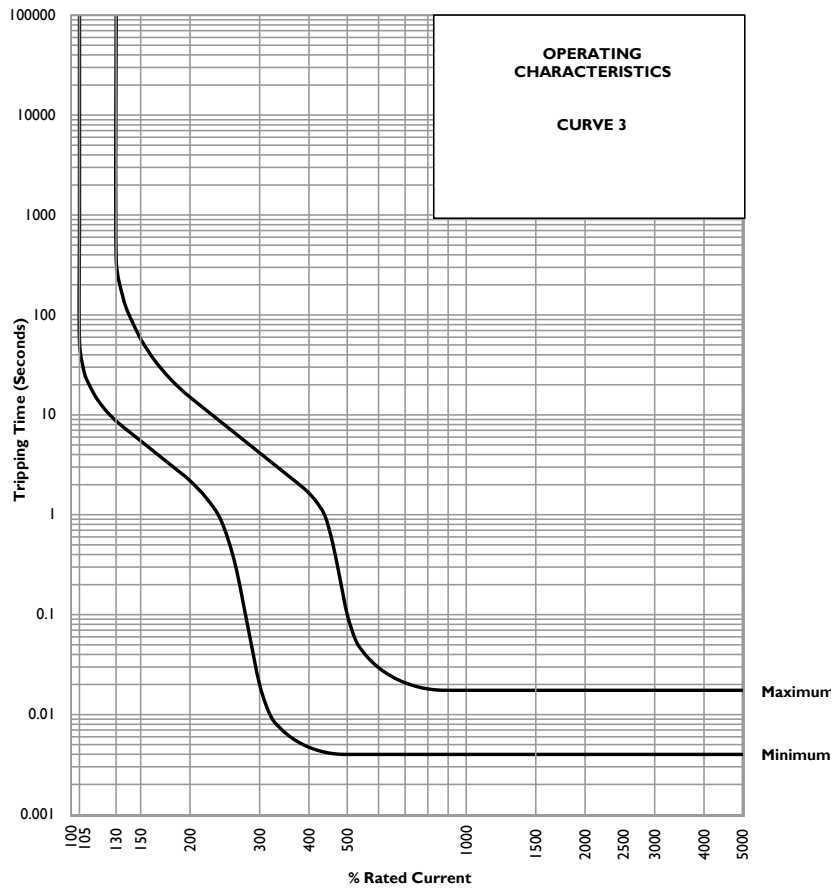
SFIEL - Series Earth Leakages

Time Delay Curves



SFIEL - Series Earth Leakages

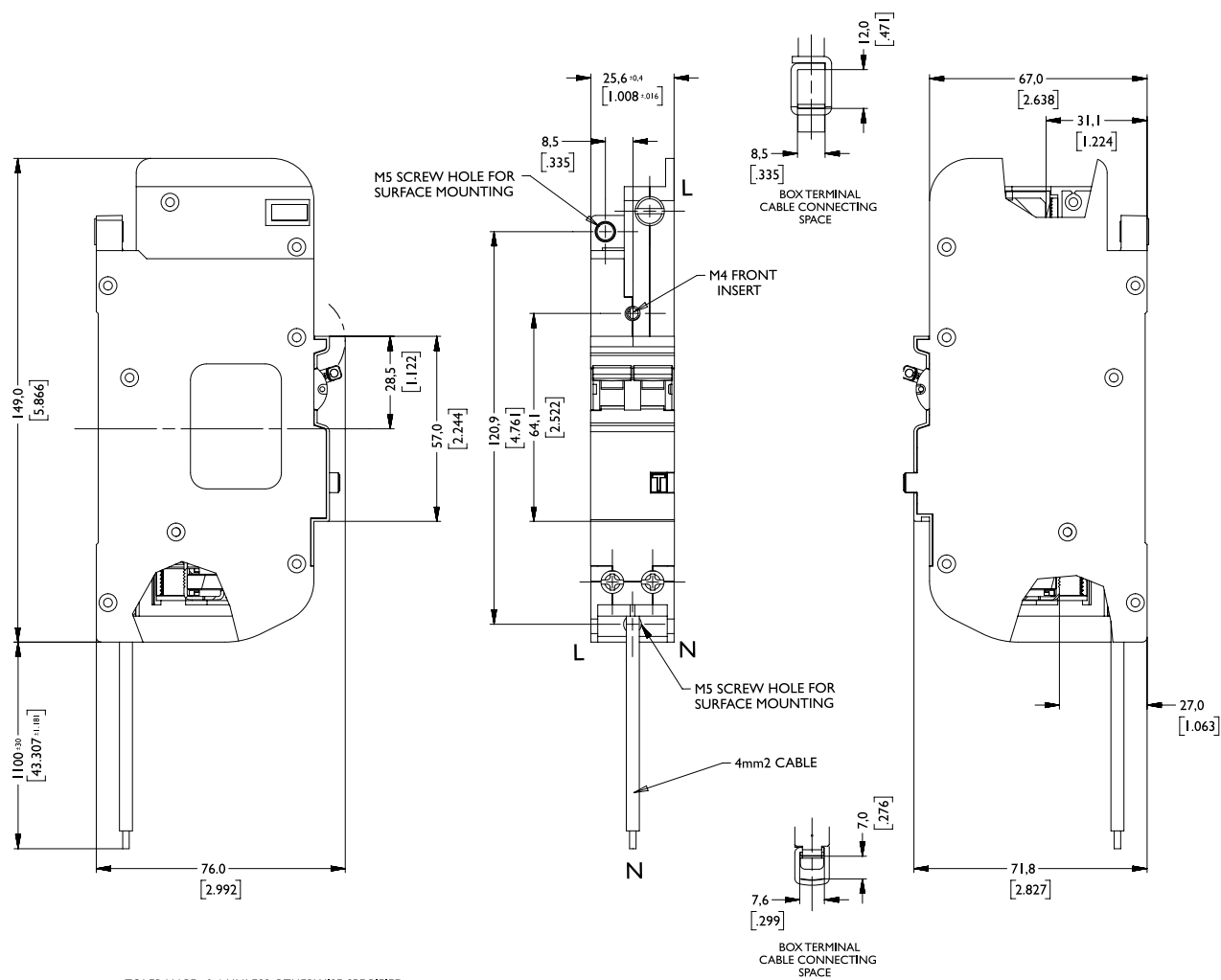
Time Delay Curves



* The published time delay curves are generated at 30°C ambient temperature with the Circuit Breaker mounted in the up-right position. The “must hold”, “must trip” and “instantaneous trip” current values are not affected by temperature, although delay time for the other operating current values may have to be adjusted using the temperature compensation curve which is available on request.

QF36 - Series Earth Leakages

Outline Dimensions: Surface Mount



TOLERANCE ±0.4 UNLESS OTHERWISE SPECIFIED
 (DIMENSION IN BRACKETS ARE IN INCH)

Архангельск (8182)63-90-72
 Астана +7(7172)727-132
 Астрахань (8512)99-46-04
 Барнаул (3852)73-04-60
 Белгород (4722)40-23-64
 Брянск (4832)59-03-52
 Владивосток (423)249-28-31
 Волгоград (844)278-03-48
 Вологда (8172)26-41-59
 Воронеж (473)204-51-73
 Екатеринбург (343)384-55-89
 Иваново (4932)77-34-06
 Ижевск (3412)26-03-58
 Казань (843)206-01-48

Калининград (4012)72-03-81
 Калуга (4842)92-23-67
 Кемерово (3842)65-04-62
 Киров (8332)68-02-04
 Краснодар (861)203-40-90
 Красноярск (391)204-63-61
 Курск (4712)77-13-04
 Липецк (4742)52-20-81
 Магнитогорск (3519)55-03-13
 Москва (495)268-04-70
 Мурманск (8152)59-64-93
 Набережные Челны (8552)20-53-41
 Нижний Новгород (831)429-08-12
 Новокузнецк (3843)20-46-81

Новосибирск (383)227-86-73
 Омск (3812)21-46-40
 Орел (4862)44-53-42
 Оренбург (3532)37-68-04
 Пенза (8412)22-31-16
 Пермь (342)205-81-47
 Ростов-на-Дону (863)308-18-15
 Рязань (4912)46-61-64
 Самара (846)206-03-16
 Санкт-Петербург (812)309-46-40
 Саратов (845)249-38-78
 Севастополь (8692)22-31-93
 Симферополь (3652)67-13-56
 Смоленск (4812)29-41-54

Сочи (862)225-72-31
 Ставрополь (8652)20-65-13
 Сургут (3462)77-98-35
 Тверь (4822)63-31-35
 Томск (3822)98-41-53
 Тула (4872)74-02-29
 Тюмень (3452)66-21-18
 Ульяновск (8422)24-23-59
 Уфа (347)22948 -12
 Хабаровск (4212)92-98-04
 Челябинск (351)202-03-61
 Череповец (8202)49-02-64
 Ярославль (4852)69-52-93