

# Устройства защитного отключения SF15

## Технические характеристики



Архангельск (8182)63-90-72  
Астана +7(7172)727-132  
Астрахань (8512)99-46-04  
Барнаул (3852)73-04-60  
Белгород (4722)40-23-64  
Брянск (4832)59-03-52  
Владивосток (423)249-28-31  
Волгоград (844)278-03-48  
Вологда (8172)26-41-59  
Воронеж (473)204-51-73  
Екатеринбург (343)384-55-89  
Иваново (4932)77-34-06  
Ижевск (3412)26-03-58  
Казань (843)206-01-48

Калининград (4012)72-03-81  
Калуга (4842)92-23-67  
Кемерово (3842)65-04-62  
Киров (8332)68-02-04  
Краснодар (861)203-40-90  
Красноярск (391)204-63-61  
Курск (4712)77-13-04  
Липецк (4742)52-20-81  
Магнитогорск (3519)55-03-13  
Москва (495)268-04-70  
Мурманск (8152)59-64-93  
Набережные Челны (8552)20-53-41  
Нижний Новгород (831)429-08-12  
Новокузнецк (3843)20-46-81

Новосибирск (383)227-86-73  
Омск (3812)21-46-40  
Орел (4862)44-53-42  
Оренбург (3532)37-68-04  
Пенза (8412)22-31-16  
Пермь (342)205-81-47  
Ростов-на-Дону (863)308-18-15  
Рязань (4912)46-61-64  
Самара (846)206-03-16  
Санкт-Петербург (812)309-46-40  
Саратов (845)249-38-78  
Севастополь (8692)22-31-93  
Симферополь (3652)67-13-56  
Смоленск (4812)29-41-54

Сочи (862)225-72-31  
Ставрополь (8652)20-65-13  
Сургут (3462)77-98-35  
Тверь (4822)63-31-35  
Томск (3822)98-41-53  
Тула (4872)74-02-29  
Тюмень (3452)66-21-18  
Ульяновск (8422)24-23-59  
Уфа (347)22948 -12  
Хабаровск (4212)92-98-04  
Челябинск (351)202-03-61  
Череповец (8202)49-02-64  
Ярославль (4852)69-52-93

## SF15 - Series Earth Leakages

The SF15 is a single phase heavy duty industrial earth leakage circuit breaker available as a surface mount and CBI Mini Rail mount device. This earth leakage circuit breaker is available with earth leakage sensitivity of 30 mA.



**SF15A**  
 Mini Rail &  
 Surface Mount



**SF15C**  
 Mini Rail &  
 Surface Mount

### Features

- Hydraulic-magnetic technology
- 100% rating capability, independent of ambient temperature
- VC 8035 compliant
- AS/NZS 3111 and AS/NZS 3190 compliant
- Immune to pulsating DC load current
- Ratings 10 to 100 A
- Earth leakage sensitivity 30 mA, 50 mA, 250 mA, 375 mA, 500 mA, 1000 mA
- Single pole plus switched neutral earth leakage protection
- Precision tripping characteristics
- Reset immediately after overload
- Suitable to use for electrical isolation

### Applications

- Mining, heavy industrial and commercial applications requiring high sensitivity earth leakage protection from electrical shock and fire hazards
- Telecom / datacom equipment
- Lighting control
- UPS equipment
- Alternative energy equipment
- Mobile power generation equipment
- Railway signalling and infrastructure

## SF15 - Series Earth Leakages

### Technical Data

Product Type	SF15A	SF15C
Approvals	VC 8035	
Number of Poles	1+N	1+N
Standard Ampere Ratings	10 to 100 A	60, 100 A
Sensitivity	30 mA	30 mA
Rated Voltage	240V	240V
Rated Interrupting/ Withstand Capacity	5 kA -	- 5 kA
Time Delay Curves	2	-

Product Type	SF15A	SF15C
Approvals	AS/NZS 3111, AS/NZS 3190	
Number of Poles	1+N	1+N
Standard Ampere Ratings	10 to 100 A	60, 100 A
Sensitivity	30 mA, 50 mA, 100 mA, 250 mA, 375 mA, 500 mA, 1000 mA	30 mA
Rated Voltage	110 / 240V	240V
Rated Interrupting / Withstand Capacity	6 kA -	- 6 kA
Time Delay Curves	2	-

Product Type	SF15
Operating Temperature Range	-40 °C to +85 °C
Mounting Options	CBI Mini Rail, surface mount
Time Delay Curves	2 (A version only)
Endurance	1500 electrical operations (AS/NZS 3111, AS/NZS 3190)
Dielectric Strength	1480V (single pole) / 1830V (multi pole), 50 Hz for one minute after testing
Weight	500 g (unpacked)
Humidity	35 to 85% relative
Altitude	Certification tests done at altitude ≈ 2000 metres. Will operate at higher altitudes.
Shock	16 G (IEC 600068-2-27)
Vibration	2 G (IEC 600068-2-27) (sinusoidal wave)
Flammability	I3 - Ignition does not persist at 850 °C after glow wire is withdrawn with an oxygen index of ≥ 28
Toxicity	F1 - Smoke index of ≤ 20 which determines the fume class
Pollution Degree	PD2 - Normally only non-conductive pollution occurs. Temporary conductivity caused by condensation is to be expected.

Earth Leakage	Wire Size mm <sup>2</sup> (IEC)	Torque (IEC)	Comments
1+N	0.75 - 35 mm <sup>2</sup>	2.5 Nm	Pozidriv #2 Combi head

## SF15 - Series Earth Leakages

### Ordering Information

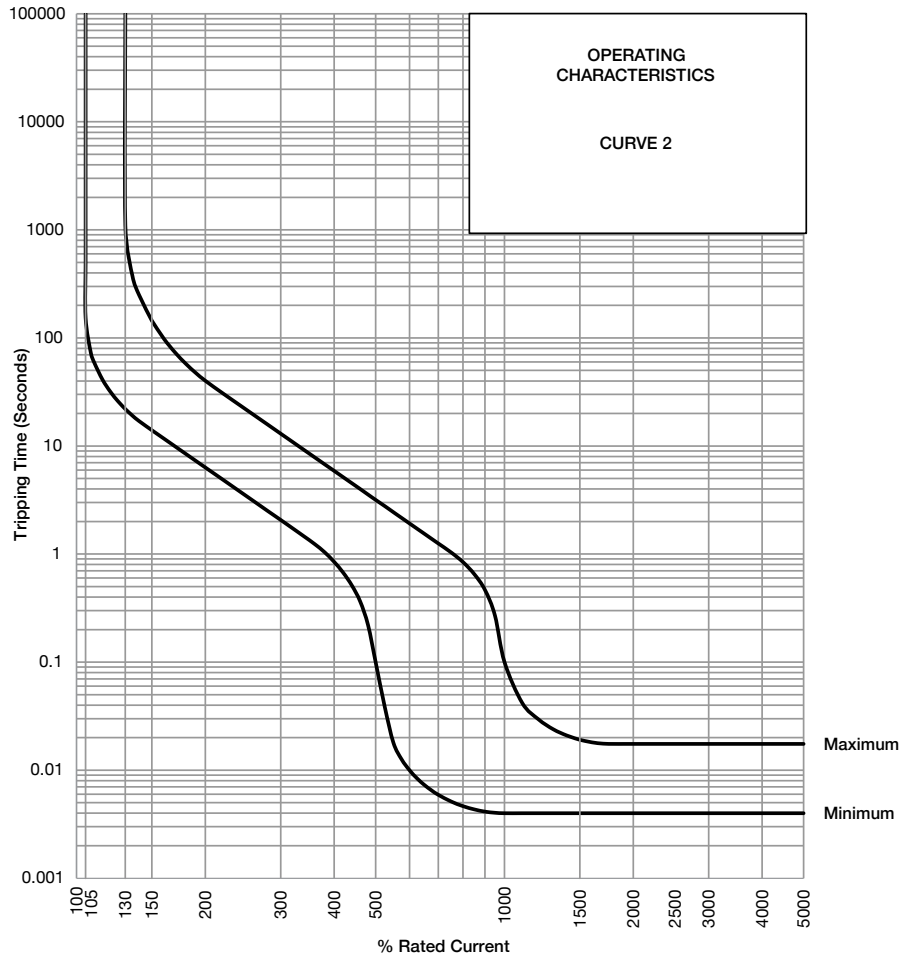
**Example Code: S-F-15-AE--2-100A-30mA-240V**

Group	1	2	3	4	5	6	7	8	9	10
<b>Requirement</b>	S Frame	Type F	1 pole + N	Overload	No auxiliary	Medium delay curve 2	Current rating 100 A	Sensitivity 30 mA	Voltage 240V AC	No special termination
<b>Long Code</b>	<b>S</b>	<b>F</b>	<b>15</b>	<b>AE</b>	<b>-</b>	<b>2</b>	<b>100A</b>	<b>30mA</b>	<b>240V</b>	<b>-</b>

<b>Group 1: Frame Type</b>	<b>Code</b>	<b>Description</b>	<b>Comments</b>
	S	65 mm wide earth leakage	
<b>Group 2: Product Type</b>	<b>Code</b>	<b>Description</b>	<b>Comments</b>
	F	240 V AC, 6 kA	
<b>Group 3: No of Poles</b>	<b>Code</b>	<b>Description</b>	<b>Comments</b>
	15	Single pole plus switched neutral (1+N)	SF15
<b>Group 4: E-L Type</b>	<b>Code</b>	<b>Description</b>	<b>Comments</b>
	AE	Overload (auto tripping)	White and green handle
	CE	Switch disconnecter	Green handle
<b>Group 5: Auxiliary / Additional Pole</b>	<b>Code</b>	<b>Description</b>	<b>Comments</b>
	-	Not applicable	Use this code if no auxiliary used
	A	Auxiliary Switch	
<b>Group 6: Time Delays</b>	<b>Code</b>	<b>Description</b>	<b>Comments</b>
	2	Medium time delay	
<b>Group 7: Current Ratings</b>	<b>Code / Description</b>		<b>Comments</b>
	10, 15, 16, 20, 30, 40, 50, 60, 80, 100 A		SF15 Ratings available vary depending on certification * Other ratings are available as special orders. Check availability.
	60, 100 A		SF15
<b>Group 8: Sensitivity</b>	<b>Code</b>	<b>Description</b>	<b>Comments</b>
	30mA	30 mA	Standard
	50mA	50 mA	Standard
	100mA	100 mA	Standard
	250mA	250 mA	Standard
	375mA	375 mA	Standard
	500mA	500 mA	Standard
1000mA	1000 mA	Standard	
<b>Group 9: Voltage</b>	<b>Code</b>	<b>Description</b>	<b>Comments</b>
	240 V	240 V AC	
<b>Group 10: Special Termination</b>	<b>Code</b>	<b>Description</b>	<b>Comments</b>
	-	No special termination	

## SFI5 - Series Earth Leakages

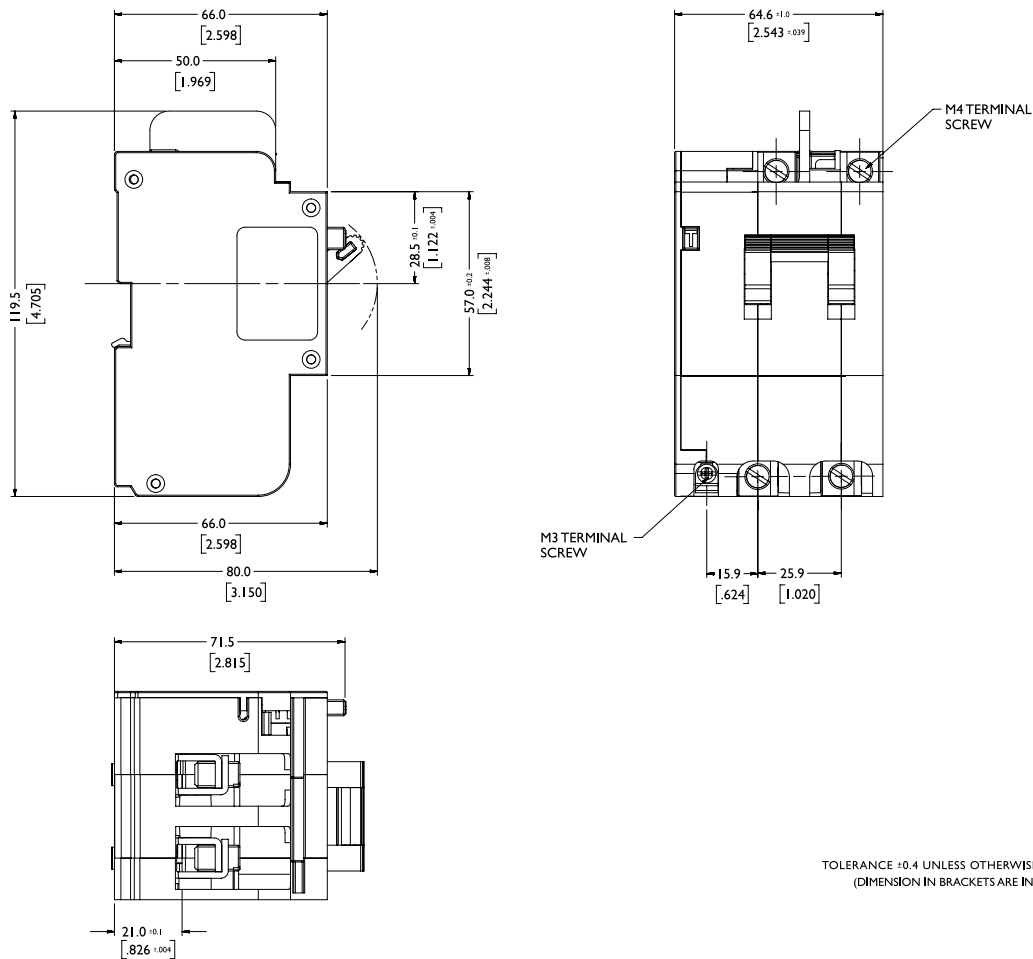
### Time Delay Curves



\* The published time delay curves are generated at 30°C ambient temperature with the Circuit Breaker mounted in the up-right position. The “must hold”, “must trip” and “instantaneous trip” current values are not affected by temperature, although delay time for the other operating current values may have to be adjusted using the temperature compensation curve which is available on request.

## SFI5 - Series Earth Leakages

### Outline Dimensions: Dual Mount



TOLERANCE  $\pm 0.4$  UNLESS OTHERWISE SPECIFIED  
 (DIMENSION IN BRACKETS ARE IN INCH)

Архангельск (8182)63-90-72  
 Астана +7(7172)727-132  
 Астрахань (8512)99-46-04  
 Барнаул (3852)73-04-60  
 Белгород (4722)40-23-64  
 Брянск (4832)59-03-52  
 Владивосток (423)249-28-31  
 Волгоград (844)278-03-48  
 Вологда (8172)26-41-59  
 Воронеж (473)204-51-73  
 Екатеринбург (343)384-55-89  
 Иваново (4932)77-34-06  
 Ижевск (3412)26-03-58  
 Казань (843)206-01-48

Калининград (4012)72-03-81  
 Калуга (4842)92-23-67  
 Кемерово (3842)65-04-62  
 Киров (8332)68-02-04  
 Краснодар (861)203-40-90  
 Красноярск (391)204-63-61  
 Курск (4712)77-13-04  
 Липецк (4742)52-20-81  
 Магнитогорск (3519)55-03-13  
 Москва (495)268-04-70  
 Мурманск (8152)59-64-93  
 Набережные Челны (8552)20-53-41  
 Нижний Новгород (831)429-08-12  
 Новокузнецк (3843)20-46-81

Новосибирск (383)227-86-73  
 Омск (3812)21-46-40  
 Орел (4862)44-53-42  
 Оренбург (3532)37-68-04  
 Пенза (8412)22-31-16  
 Пермь (342)205-81-47  
 Ростов-на-Дону (863)308-18-15  
 Рязань (4912)46-61-64  
 Самара (846)206-03-16  
 Санкт-Петербург (812)309-46-40  
 Саратов (845)249-38-78  
 Севастополь (8692)22-31-93  
 Симферополь (3652)67-13-56  
 Смоленск (4812)29-41-54

Сочи (862)225-72-31  
 Ставрополь (8652)20-65-13  
 Сургут (3462)77-98-35  
 Тверь (4822)63-31-35  
 Томск (3822)98-41-53  
 Тула (4872)74-02-29  
 Тюмень (3452)66-21-18  
 Ульяновск (8422)24-23-59  
 Уфа (347)22948 -12  
 Хабаровск (4212)92-98-04  
 Челябинск (351)202-03-61  
 Череповец (8202)49-02-64  
 Ярославль (4852)69-52-93