

# Устройства защитного отключения QАЗ6

## Технические характеристики



Архангельск (8182)63-90-72  
Астана +7(7172)727-132  
Астрахань (8512)99-46-04  
Барнаул (3852)73-04-60  
Белгород (4722)40-23-64  
Брянск (4832)59-03-52  
Владивосток (423)249-28-31  
Волгоград (844)278-03-48  
Вологда (8172)26-41-59  
Воронеж (473)204-51-73  
Екатеринбург (343)384-55-89  
Иваново (4932)77-34-06  
Ижевск (3412)26-03-58  
Казань (843)206-01-48

Калининград (4012)72-03-81  
Калуга (4842)92-23-67  
Кемерово (3842)65-04-62  
Киров (8332)68-02-04  
Краснодар (861)203-40-90  
Красноярск (391)204-63-61  
Курск (4712)77-13-04  
Липецк (4742)52-20-81  
Магнитогорск (3519)55-03-13  
Москва (495)268-04-70  
Мурманск (8152)59-64-93  
Набережные Челны (8552)20-53-41  
Нижний Новгород (831)429-08-12  
Новокузнецк (3843)20-46-81

Новосибирск (383)227-86-73  
Омск (3812)21-46-40  
Орел (4862)44-53-42  
Оренбург (3532)37-68-04  
Пенза (8412)22-31-16  
Пермь (342)205-81-47  
Ростов-на-Дону (863)308-18-15  
Рязань (4912)46-61-64  
Самара (846)206-03-16  
Санкт-Петербург (812)309-46-40  
Саратов (845)249-38-78  
Севастополь (8692)22-31-93  
Симферополь (3652)67-13-56  
Смоленск (4812)29-41-54

Сочи (862)225-72-31  
Ставрополь (8652)20-65-13  
Сургут (3462)77-98-35  
Тверь (4822)63-31-35  
Томск (3822)98-41-53  
Тула (4872)74-02-29  
Тюмень (3452)66-21-18  
Ульяновск (8422)24-23-59  
Уфа (347)22948 -12  
Хабаровск (4212)92-98-04  
Челябинск (351)202-03-61  
Череповец (8202)49-02-64  
Ярославль (4852)69-52-93

## QA36 - Series Earth Leakages



**QA36A**  
Dual Mount



**QA36C**  
Dual Mount

### Features

- Hydraulic-magnetic technology
- 100% rating capability, independent of ambient temperature
- VC 8035 compliant
- Ratings 5 to 63 A
- Earth Leakage sensitivity 30 mA
- Three pole plus switched neutral earth leakage protection
- Precision tripping characteristics
- Trip indication with mid-trip position
- Reset immediately after overload
- Suitable to use for electrical isolation
- Shell designed for easier installation onto busbar
- 57 mm front escutcheon

### Applications

- Residential and commercial applications requiring high sensitivity earth leakage protection from electrical shock and fire hazards
- Telecom / datacom equipment
- Lighting control
- UPS equipment
- Alternative energy equipment
- Mobile power generation equipment
- Railway signalling equipment
- Industrial equipment

### Approvals

VC 8035

### Technical Data

Product Type	QA36A	QA36C
Approvals	VC 8035	
Number of Poles	3 + N	3 + N
Standard Ampere Ratings	6 to 63 A	40 and 63 A
Sensitivity	30 mA	30 mA
Equipment Type Rated Voltage	Earth leakage 230V	Earth leakage 230V
Rated Interrupting / Withstand Capacity	2.5 kA	- 2.5 kA
Time Delay Curves	2	-
Operating Temperature Range	-40 °C to +85 °C	
Mounting Options	Dual mounting (DIN & Mini)	

## QA36 - Series Earth Leakages

### Technical Data

Product Type	QA36A	QA36C
Approvals	IEC / EN 60947-2, VDE	
Number of Poles	2 (I+N)	2 (I+N)
Standard Ampere Ratings	6 to 63 A	63 A
Sensitivity	30 mA	30 mA
Equipment Type Rated Voltage	Earth leakage 240 V	Earth leakage 240 V
Rated Interrupting / Withstand Capacity	3 kA -	- 3 kA
Time Delay Curves	2	-
Operating Temperature Range	-40 °C to +85 °C	
Mounting Options	Dual mounting (DIN & Mini), surface mount, front mount	

Earth Leakage	Wire Size mm <sup>2</sup> (IEC)	Torque (IEC)	Comments
I+N	0.75 - 35 mm <sup>2</sup>	2.5 Nm	Pozidriv #2 Combi head

### Long Code

Example Code: **Q-A-36-A--DM-2-63A-30mA-240V---**

Group	1	2	3	4	5	6	7	8	9	10
Requirement	Q Frame	Type F	I pole + N	Overload	No Auxiliary or additional pole	Dual Mount	Medium delay curve 2	Current Rating 63 A	Sensitivity 30 mA	Voltage 240 V AC
Long Code	<b>Q</b>	<b>A</b>	<b>36</b>	<b>A</b>	<b>-</b>	<b>DM</b>	<b>2</b>	<b>63A</b>	<b>30mA</b>	<b>240V</b>

Group 1: Frame Type	Code	Description	Comments	
	Q	36 mm wide Earth Leakage		
Group 2: Product Type	Code	Description	Comments	
	A	240 V AC 2.5 kA	2.5 kA (VC 8035)	
Group 3: No of Poles	Code	Description	Comments	
	36	Three pole plus switched neutral (3+N)	QA36	
Group 4: E-L Type	Code	Description	Comments	
	A	Overload (Auto Tripping)	White and green handle	
	C	Switch Disconnecter	Green handle	
Group 5: Auxiliary / Additional Pole	Code	Description	Comments	
	-	Not applicable	Use this code if no Auxiliary used	
Group 6: Mounting	Code	Description	Comments	
	DM	Dual (DIN + CBi Mini rail ) mount	Dual Mount supplied in black body only - 57 mm Escutcheon	
Group 7: Time Delays	Code	Description	Instantaneous Trip Point (x In)	Comments
	C	Medium time delay HRC I 13%	5 – 10	White handle
Group 8: Current Ratings	Code / Description		Comments	
	6, 10, 15, 20, 25, 30, 32, 40, 50, 60, 63 A		QA36 Ratings available vary depending on certification * Other ratings are available as special orders. Check availability.	
	40, 63 A		QF36	

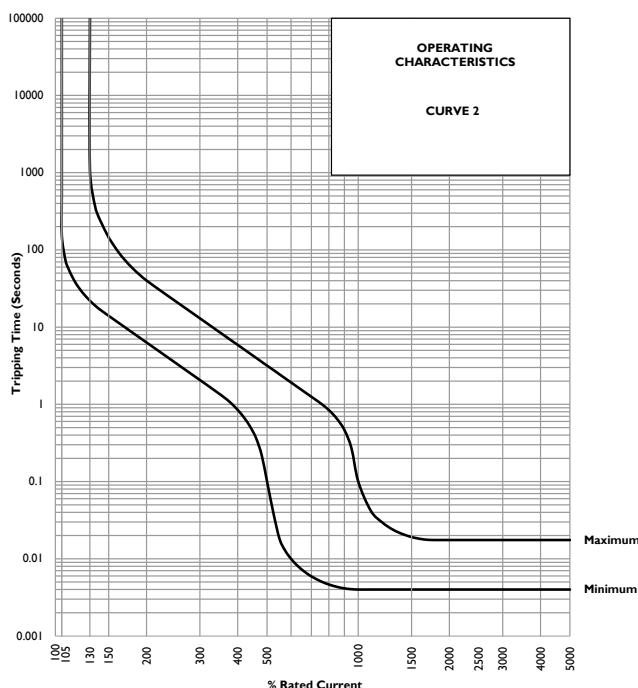
## QA36 - Series Earth Leakages

### Long Code

Group 9: Sensitivity	Code	Description	Comments
	30 mA	30mA	Standard
Group 10: Voltage	Code	Description	Comments
	240 V	240 V AC	

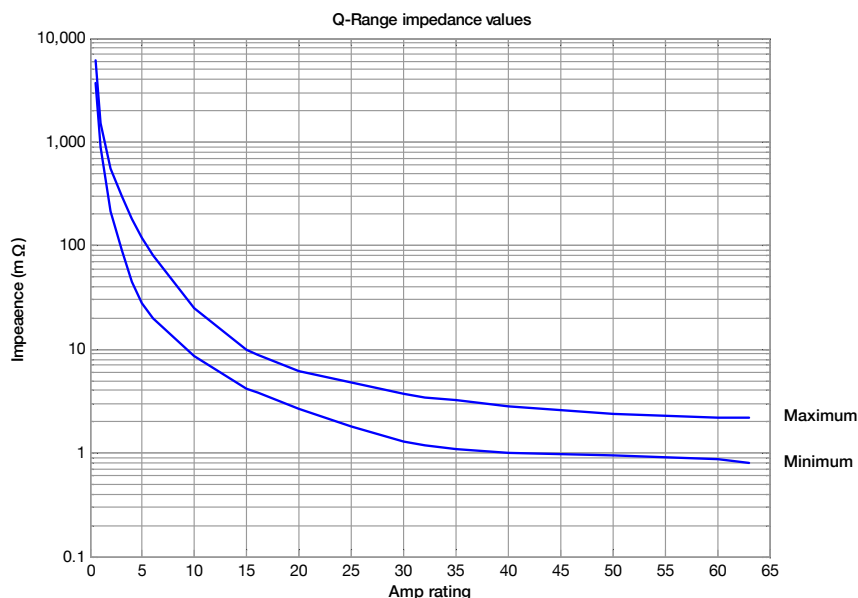
*For options not listed, please contact CBI for assistance*

### Time Delay Curves



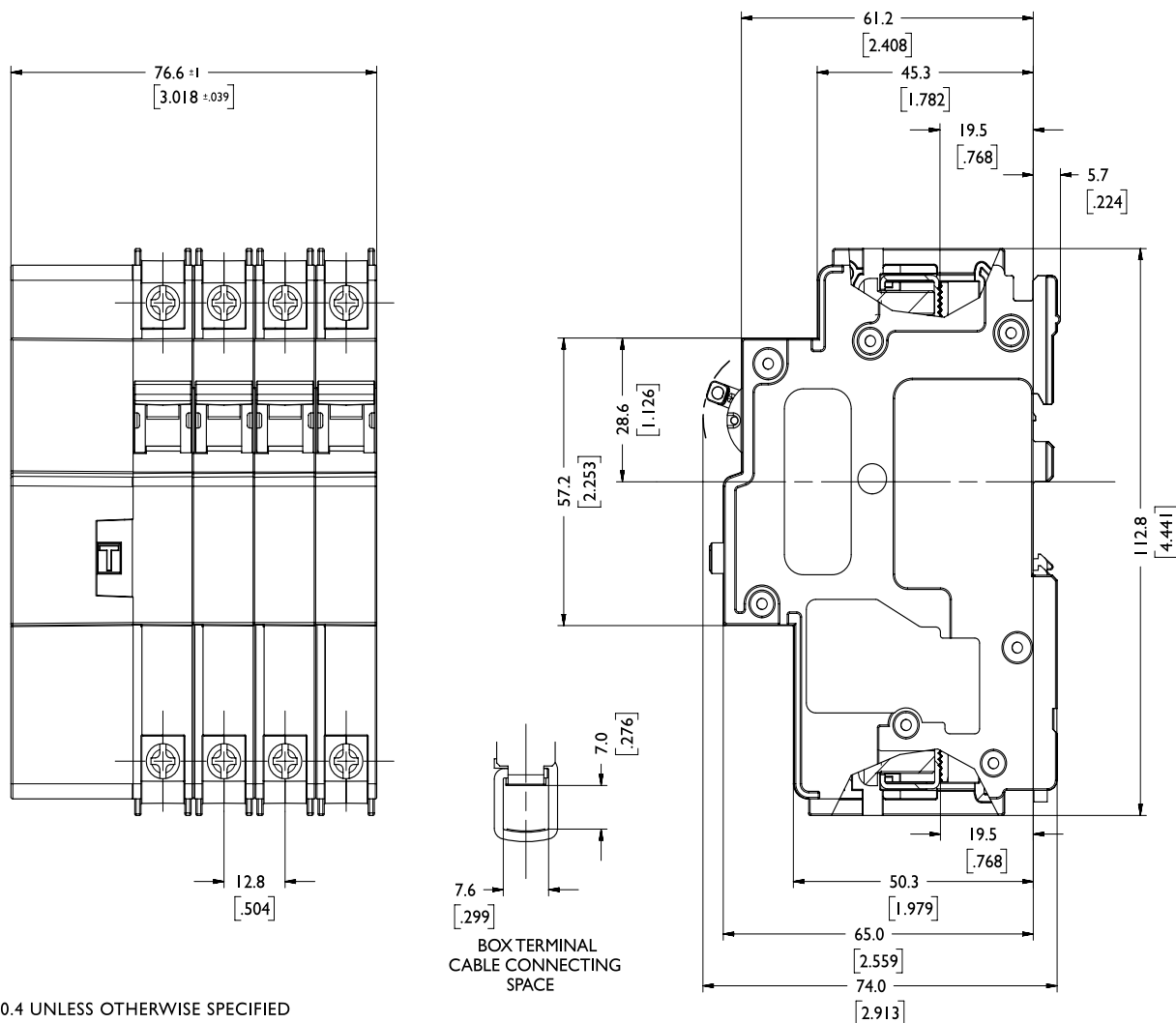
\* The published time delay curves are generated at 30°C ambient temperature with the Circuit Breaker mounted in the up-right position. The “must hold”, “must trip” and “instantaneous trip” current values are not affected by temperature, although delay time for the other operating current values may have to be adjusted using the temperature compensation curve which is available on request.

### Internal Impedance vs Current Rating



## QA36 - Series Earth Leakages

### Outline Dimensions: Dual Mount



TOLERANCE ±0.4 UNLESS OTHERWISE SPECIFIED  
 (DIMENSION IN BRACKETS ARE IN INCH)

Архангельск (8182)63-90-72  
 Астана +7(7172)727-132  
 Астрахань (8512)99-46-04  
 Барнаул (3852)73-04-60  
 Белгород (4722)40-23-64  
 Брянск (4832)59-03-52  
 Владивосток (423)249-28-31  
 Волгоград (844)278-03-48  
 Вологда (8172)26-41-59  
 Воронеж (473)204-51-73  
 Екатеринбург (343)384-55-89  
 Иваново (4932)77-34-06  
 Ижевск (3412)26-03-58  
 Казань (843)206-01-48

Калининград (4012)72-03-81  
 Калуга (4842)92-23-67  
 Кемерово (3842)65-04-62  
 Киров (8332)68-02-04  
 Краснодар (861)203-40-90  
 Красноярск (391)204-63-61  
 Курск (4712)77-13-04  
 Липецк (4742)52-20-81  
 Магнитогорск (3519)55-03-13  
 Москва (495)268-04-70  
 Мурманск (8152)59-64-93  
 Набережные Челны (8552)20-53-41  
 Нижний Новгород (831)429-08-12  
 Новокузнецк (3843)20-46-81

Новосибирск (383)227-86-73  
 Омск (3812)21-46-40  
 Орел (4862)44-53-42  
 Оренбург (3532)37-68-04  
 Пенза (8412)22-31-16  
 Пермь (342)205-81-47  
 Ростов-на-Дону (863)308-18-15  
 Рязань (4912)46-61-64  
 Самара (846)206-03-16  
 Санкт-Петербург (812)309-46-40  
 Саратов (845)249-38-78  
 Севастополь (8692)22-31-93  
 Симферополь (3652)67-13-56  
 Смоленск (4812)29-41-54

Сочи (862)225-72-31  
 Ставрополь (8652)20-65-13  
 Сургут (3462)77-98-35  
 Тверь (4822)63-31-35  
 Томск (3822)98-41-53  
 Тула (4872)74-02-29  
 Тюмень (3452)66-21-18  
 Ульяновск (8422)24-23-59  
 Уфа (347)22948 -12  
 Хабаровск (4212)92-98-04  
 Челябинск (351)202-03-61  
 Череповец (8202)49-02-64  
 Ярославль (4852)69-52-93